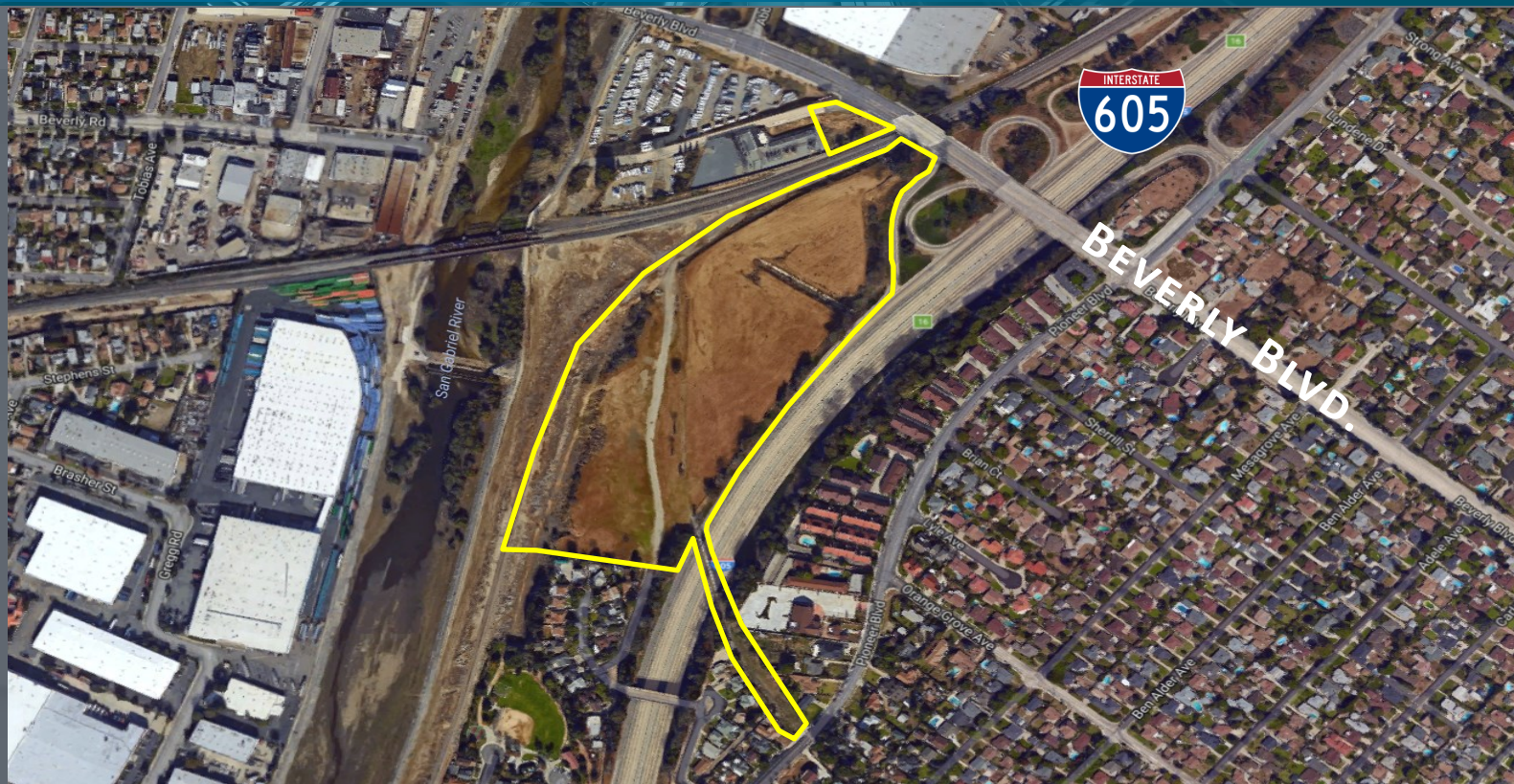


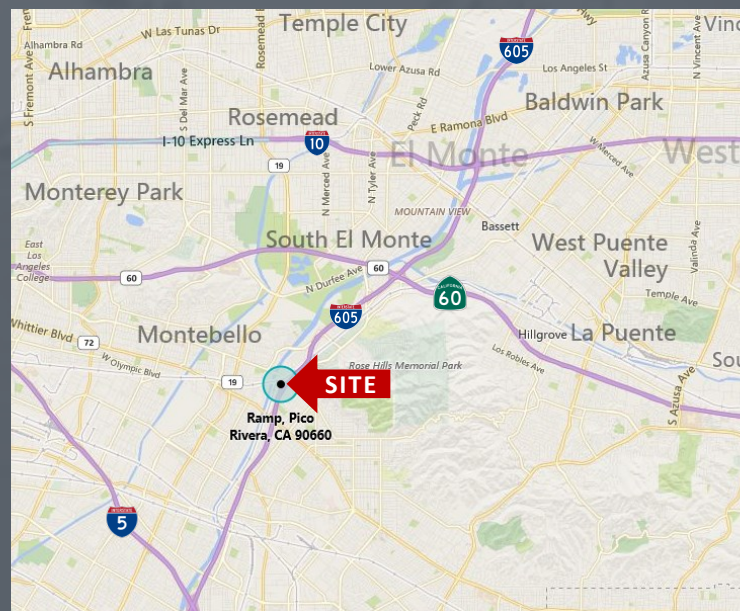
AVAILABLE | FOR SALE | 19.06 ACRES

INDUSTRIAL PLANNED DEVELOPMENT ZONING



SUMMARY

- Size: 19.06 acres (830,346 SF)
- Location: Southwest Quadrant of Beverly Boulevard and the 605 Freeway
- Current Condition: Undeveloped Land
- Zoning: IPD (Industrial Planned Development) Strong Potential to Rezone for Retail
- Frontage: Approx. 1,260 ft on 605 Freeway
- Centrally located: Easy access to major Southern California freeways and to the Ports of Los Angeles and Long Beach
- Tremendous freeway visibility on I-605
- One of the few remaining larger undeveloped parcels in the area
- 243,000 - 248,000 cars / days



DENNIS SANDOVAL

Ex. VP / Principal

562.695.7244

dsandoval@daumcre.com

CA License #00687518

BOB DIPRE

Ex. Vice President

562.576.1422

bdipre@daumcre.com

CA License #00526068

KEVIN SANDOVAL

Associate

562.576.1420

ksandoval@daumcre.com

CA License # 01963831